

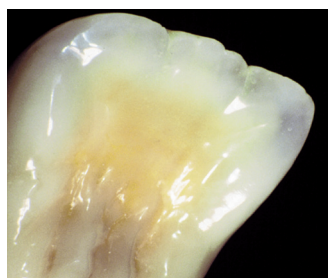


Create your world with **Initial** from **GC.**

The all-round ceramic system for every indication

Metal Ceramics

GC Initial MC • GC Initial LF • GC Initial Ti



initial

<http://initial.gceurope.com>

The Initial System is a line of six specialised ceramics that can be used to create metal ceramic and full ceramic restorations for every indication using any fabrication process and framework. For more information on the complete Initial system please request our brochure.

Whether your dental laboratory works with classic metal-based standard alloys, high-gold alloys and/or galvano veneers or even wants to fire on titanium alloys, with Initial MC, Initial LF and Initial Ti there is a metal ceramic to suit your needs.



GC



Metal Ceramics: GC Initial MC • GC Initial LF • GC Initial Ti

GC Initial MC

is a metal ceramic specifically adapted for all conventional alloy types within a CTE range of 13.8 to 14.9 x10⁻⁶K⁻¹ (25-500°C), irrespective of whether they contain silver, have a reduced gold content or are palladium-based, as well as veneering NPA and galvano crowns.

- Feldspar ceramic with a firing temperature below 900°C
- Specifically matched coefficients of thermal expansion
- Excellent physical and optical properties
- Extremely low shrinkage properties
- Harmonised shades for superb colour matching and natural life-like aesthetics
- Suitable for the sintering technology in combination with Initial MC/LF Connector Paste

GC Initial LF

is a low-fusing ceramic specifically adapted for ceramic-metal alloys within a CTE range of 13.8 to 14.9 x10⁻⁶K⁻¹ (25-500°C), NPA, high- and reduced-content gold alloys, and galvano or palladium-based alloys (with a silver content < 20 %). It is also ideal for correcting restorations made with Initial MC or as a build-up material on Initial PC copings.

- Synthetic ceramic with a firing temperature of 770°C
- Excellent low-shrinkage properties
- Reduced number of hard leucite crystals
- Very stable, even after repeated firings
- Superb polishability
- Superior aesthetics for both metal ceramic and full ceramic restorations
- Exactly cross-matched coefficient of thermal expansion

GC Initial Ti

is a specifically adapted ceramic for titanium frameworks. It is ideal for creating restorations that are biocompatible and highly aesthetic where full ceramic cannot be applied.

- Exactly cross-matched coefficient of thermal expansion and optimal bonding
- Firing temperature of 780°C
- Harmonised shades for superb colour matching and natural life-like aesthetics

Accessories

GC Initial MC/LF Connector Paste can be used to seal refractory die materials for ceramic sintering.

- Ready to use red coloured paste for optimal application on refractory models before firing
- Perfect match with Initial MC/LF



GC Initial INmetalbond

acts as a buffer between Initial metal ceramics and dental alloys to block escaping metal oxides.

It can be used on all precious and non-precious PFM alloys.

- Ready to use paste and easy to use
- Improves and secures the chemical bond on various types of alloys
- Allows a wider span of CTE compatibility
- Compatible with Initial MC/LF



GC Initial Ti Bonder

ensures a strong bond between titanium frame structures and Initial Ti ceramic.

- Easy to apply and short working steps
- Suitable for all titanium metals – whether pure or alloyed, cast or milled
- Perfect match between Initial Ti Bonder and Initial Ti ceramic



A modular System

Initial is available as modular ceramic sets. Each set contains different components, by adding them together, you can create increasingly aesthetic restorations.

Module 1: Basic Set MC/LF/Ti Powder Opaque MC Paste Opaque

Contains all the fundamental opaque ceramics, shade ceramics and liquids. Designed for basic, standard build-up and to meet the 'standard' requirements of the Vitapan* Classical shade guide.

Module 2: Basic Plus Set MC/LF/Ti Powder Opaque MC Paste Opaque

Contains additional shades and accessories such as Opaque Modifiers, Opaqus Dentin and shoulder ceramics. Add to the Basic Set to lift your restorations to a higher aesthetic level.

Module 3: Advanced Set MC, LF, Ti

Completes the GC Initial system by adding the remaining shades and accessories to either the Basic or Basic Plus Set, so enabling restorations with the most advanced aesthetics.

Entrance Kit (1 colour set A3) MC Powder Opaque, MC Paste Opaque, LF, Ti

Consists of small amounts of the key ceramics, shade ceramics and liquids to test on a limited number of restorations.

Standard Set (6 colour set) MC Powder Opaque, MC Paste Opaque

**GC Initial INvivo/INSitu
MC, LF, PC, AL, Zr, Ti**
Effect materials for internal - external use

Technical Specifications:

Property	GC Initial MC	GC Initial LF	GC Initial Ti
Dentin firing (°C)	890	770	780
CTE (25-500°C; 10 ⁻⁶ K ⁻¹)	2nd/4th firing	2nd/4th firing	2nd/4th firing
	13.1/13.3	11.6/11.8	8.6/8.6
Glass transition temperature (°C)	575	510	575
Solubility (µg/cm ²)	25	15	11
Density (g/cm ³)	2.52	2.48	2.45
Flexural strength (MPa)	84	80	70
Bonding strength (MPa)	50	50	N/a
Mean particle size (µm; D 50%)	25	21.2	22.2

GC Initial MC, GC Initial LF and GC Initial Ti follow EN ISO 9693:2000 (The stated technical/physical values refer to the results of internal tests.)

GC EUROPE N.V.

Head Office
Researchpark
Haasrode-Leuven 1240
Interleuvenlaan 33
B – 3001 Leuven
Tel. +32.16.74.10.00
Fax. +32.16.40.48.32
info@gceurope.com
http://www.gceurope.com

GC UNITED KINGDOM Ltd.

12-15, Coopers Court
Newport Pagnell
UK – Bucks. MK16 8JS
Tel. +44.1908.218.999
Fax. +44.1908.218.900
info@uk.gceurope.com
http://uk.gceurope.com

*Vita is a registered trademark of Vita Zahnfabrik, Bad Säckingen.

