

Beauty and  
strength in the  
blink of an eye

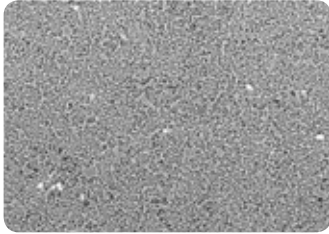


*initial*<sup>™</sup>  
LRF BLOCK

Leucite reinforced  
feldspar ceramic  
CAD/CAM block  
from GC

**GC**

# Life-like restorations at your own rhythm



SEM image of Initial LRF structure.  
Source GC R&D, Austria, 2017

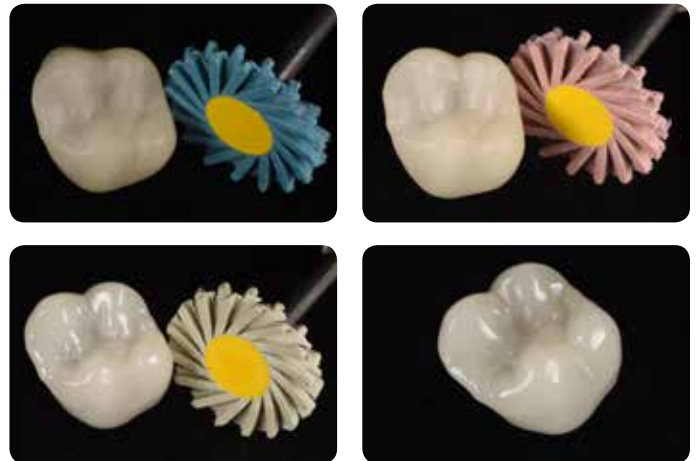
Initial™ LRF BLOCK from GC is a leucite-reinforced feldspar CAD/CAM block for full-contour, all-ceramic restorations. For its development, GC relied on more than 15 years of experience with the Initial ceramics, which are well-known among dental technicians.

The leucite content **reinforces** the structure and makes it possible to use both in the anterior and posterior areas, even without glazing. The choice of size and distribution of the leucite crystals impacts the reflection of incident light and makes it **remarkably aesthetic**.

## Choose your preferred finishing path

### Easy manual polishing...

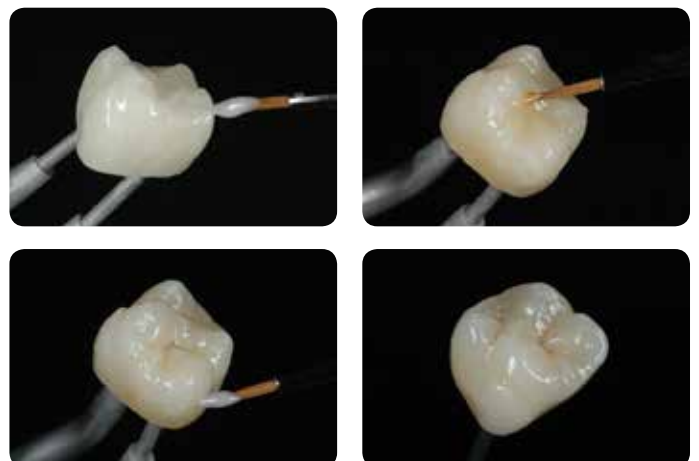
Excellent gloss and aesthetics can be obtained in just a few polishing steps. There is no need for a furnace with this option.



Gloss is achieved easily with dedicated polishing instruments such as Diapol Twist for porcelain (EVE)

### ... or glazing and firing with characterisation possibilities

The dedicated Initial LRF Glaze Paste (GC) can easily be applied due to its optimal consistency. Optionally, it can be mixed with Initial Spectrum Stains (GC) to further characterise the restoration for a life-like appearance.



Application of Initial LRF Glaze Paste mixed with Initial Spectrum Stains

# Enjoy beautiful results with the simplicity of a monochromatic block

The unique composition of Initial LRF BLOCK delivers perfect blending with the natural tooth structure, providing thereby superb clinical results. Yet, with the ease of using a monochromatic block.



Monochromatic posterior onlay luted with a dual cure adhesive resin cement, G-CEM LinkForce (GC).  
Courtesy of Dr S. Cazier, France

## In both anterior and posterior regions

Anterior restorations can be personalised when needed by mixing stains, such as Initial Spectrum Stains.



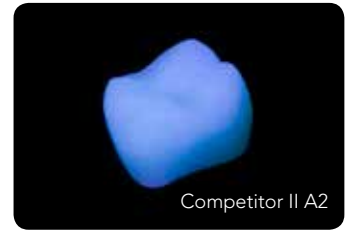
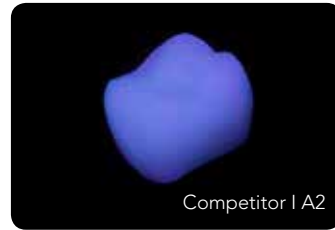
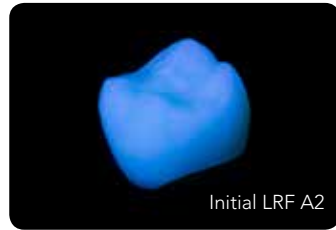
Anterior restorations showing superb shade integration.  
Courtesy of Dr R. Venelinov, Bulgaria

# The natural beauty of feldspathic ceramics

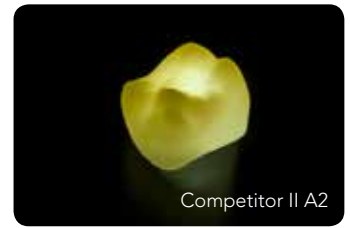
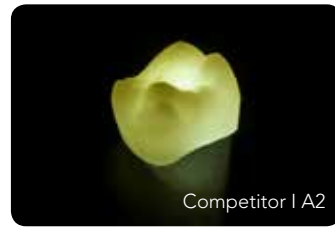
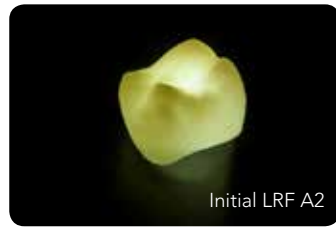


Courtesy of Dr. J.Tapia Guadix, Spain

Initial LRF BLOCK ensures natural fluorescence and opalescence, designed to blend with the tooth structure.



Fluorescence in comparison to natural tooth and competitors



Opalescence in comparison to natural tooth and competitors  
 Courtesy of MDT M. Brusch, Germany/Joaquin Garcia Arranz (Quini), Spain

Choose the translucency level that best fits your preparation and optimise your aesthetic results

**Value (Lightness)**

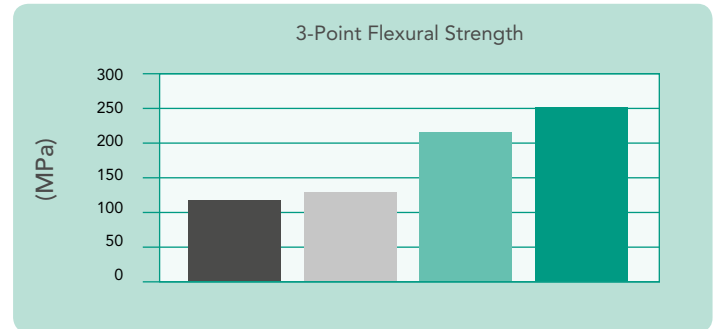
**Best indicated for**

Translucency Level	Color Swatches	Best Indicated For
High translucency	B1-HT, A1-HT, A2-HT, A3-HT, A3,5-HT	Inlay/onlay & veneer
Low translucency	BL, B1-LT, A1-LT, A2-LT, A3-LT, A3,5-LT	Anterior & posterior crowns

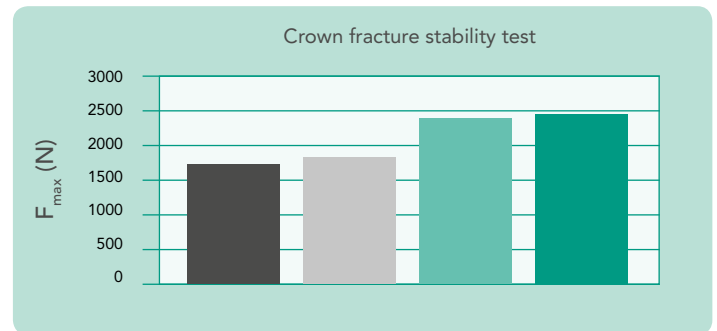
# The strength of leucite reinforced restorations

Whether you choose to polish or glaze the restoration, Initial LRF BLOCK is among the blocks with the highest fracture stability and flexural strength in its category. As a result, the ceramic can safely be used for anterior as well as posterior restorations, even without firing.

- Competitor I  
(conventional glass ceramic block)
- Competitor II  
(conventional glass ceramic block)
- Polished Initial LRF BLOCK
- Initial LRF BLOCK + Glaze Paste



Source: GC R&D, Austria, 2017



Source: GC R&D, Austria, 2017

After milling, the Initial LRF restoration has an extremely smooth, non-porous surface. Its strength reduces the risk of chipping and, due to the detailed finishing, the marginal contours fit seamlessly to the tooth.



## Low strength blocks

- + High aesthetics
- Limited indications

## High strength blocks

- + Extended indications
- Longer processing
- Firing needed to reach high strength

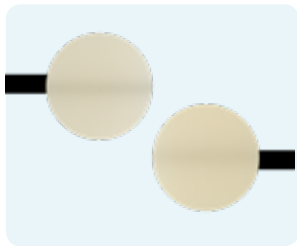
## The best of both worlds

### Initial LRF BLOCK

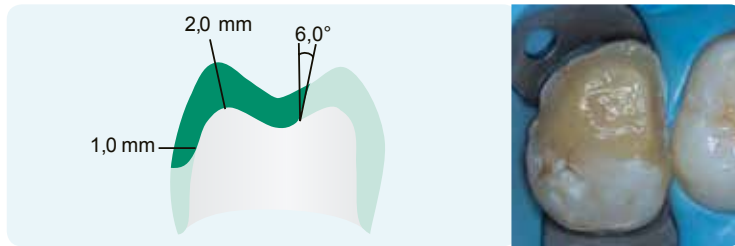
- + Simple and fast processing
- + Suitable for many indications
- + High aesthetics
- + Same strength with firing or polishing

# Discover Initial LRF in just a few steps

## Prepare, scan and mill



Select the shade transluency HT (left) or LT (right)



Follow preparation guidelines; deep chamfer or rounded shoulder



Scan, design and mill

## Try-in, check occlusion and select your finishing path



Manual polishing

of



Glazing and firing  
Courtesy of M. Brusch, MDT

## Prepare and cement the restoration



Apply hydrofluoric acid (5-9%) for 60 s and rinse



Use a silane coupling agent, such as G-Multi PRIMER (GC)



Optional etching and bonding of the preparation such as with G-Premio BOND (GC)



Cementation according to instructions, in this case with G-CEM LinkForce (GC)



Final result showing perfect integration

# Strong and beautiful restorations at your own rhythm

## Speed

- No obligatory firing
- Smooth surface after milling - easily finished

## Strength

- Stronger than conventional feldspar ceramics
- Less chipping
- Perfect margins

## Aesthetics

- Inconspicuous appearance
- Natural light dynamics

## Luting recommendations

In case the preparation is non-retentive, an adhesive resin cement (such as G-CEM LinkForce) is recommended.



**Download our GC Luting Guide** for step-by-step instructions for each cementation option.



## Indications

	Dual-cure adhesive resin cement G-CEM LinkForce	Self-adhesive resin cement G-CEM LinkAce	Resin-Modified Glass Ionomers FujiCEM 2 SL or Fuji PLUS	Light-cure adhesive resin G-aenial Universal Flo
Veneers				
Inlays/ Onlays		 Retentive preparations	 (only inlays)	 <2mm
Crowns				

# GC Initial LRF BLOCK - Beauty and strength in the blink of an eye

## Available packages & related products



Initial LRF BLOCK  
for CEREC®/inLab



Initial LRF BLOCK  
UNIVERSAL



Initial Spectrum  
Stains



Initial LRF Glaze Paste  
and Diluting Liquid



G-CEM LinkForce

CEREC/inLab codes* for GC Initial LRF BLOCK; Quantity: 5 pieces											
876501	A1-HT-12	876507	A2-HT-12	876513	A3-HT-12	876519	A3.5-HT-12	876525	B1-HT-12	876531	BL-HT-12
876502	A1-HT-14	876508	A2-HT-14	876514	A3-HT-14	876520	A3.5-HT-14	876526	B1-HT-14	876532	BL-HT-14
876503	A1-HT-14L	876509	A2-HT-14L	876515	A3-HT-14L	876521	A3.5-HT-14L	876527	B1-HT-14L	876533	BL-HT-14L
876504	A1-LT-12	876510	A2-LT-12	876516	A3-LT-12	876522	A3.5-LT-12	876528	B1-LT-12		
876505	A1-LT-14	876511	A2-LT-14	876517	A3-LT-14	876523	A3.5-LT-14	876529	B1-LT-14		
876506	A1-LT-14L	876512	A2-LT-14L	876518	A3-LT-14L	876524	A3.5-LT-14L	876530	B1-LT-14L		
876590	GC Initial LRF Glaze Paste and Diluting Liquid										

\*For UNIVERSAL codes, please visit our website: <https://www.gceurope.com/products/initiallrfblock/>

GC Trademarks: FujiCEM 2, Fuji PLUS, G-aenial Universal Flo, G-CEM LinkAce, G-CEM LinkForce, G-Multi PRIMER, G-Premio BOND, Initial Glaze Paste, Initial Spectrum Stains



### GC EUROPE N.V.

Head Office  
Researchpark, Haasrode-Leuven 1240  
Interleuvenlaan 33, B-3001 Leuven  
Tel. +32.16.74.10.00  
Fax. +32.16.40.48.32  
info.gce@gc.dental  
<http://www.gceurope.com>

### GC UNITED KINGDOM Ltd.

Coopers Court  
Newport Pagnell  
UK-Bucks. MK16 8JS  
Tel. +44.1908.218.999  
Fax. +44.1908.218.900  
info.uk@gc.dental  
<http://uk.gceurope.com>