



# Rock solid at all depths

GRADIA<sup>®</sup> CORE  
from GC

Dual-cure composite  
for core build-up &  
post cementation

**GC**

# GRADIA CORE from GC

## Rock solid at all depths

A strong core is a necessity to achieve a long-lasting restoration. Achieving such a strong core requires a resistant material. The application should be straightforward with no margin for error so a reliable result can be obtained, time after time. Discover **GRADIA CORE**, a dual-cure radiopaque composite for post luting & core build-up that combines excellent mechanical resistance and handling like no other. For convenience and performance - at every step.



### Post cementation and core build-up in one thixotropic material

During insertion of the post into the canal, **GRADIA CORE** becomes more fluid, which ensures good adaptation. However, during the build-up procedure, it keeps its shape.



Fluid under influence of shear stress



Stable form in absence of pressure

### Secure retention with universal bonding

The universal bonding system **G-Premio BOND** can now be used in combination with **GRADIA CORE**, keeping your product inventory limited while ensuring perfect bond strength.

By mixing it 1:1 with its dual-cure activator (DCA), the polymerisation of the bonding is ensured, even at the deepest point of the root canal.



Bond strength to dentine (MPa), dual cure 21

Source: GCC R&D - Data on file.



Initial situation

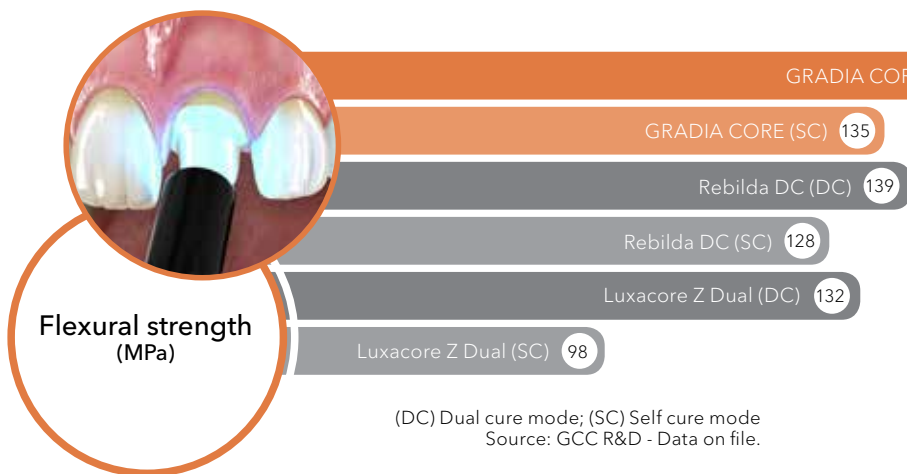


Trial fit of the post and bonding with **G-Premio BOND & dual cure activator (DCA)**



Core build-up with **GRADIA CORE**

## Optimal polymerisation of all components



Even in self-cure mode, GRADIA CORE is efficiently cured. It can be used in a bulk-fill method, without depth limitations.

## Strong and homogeneous for a solid base

GRADIA CORE is a solid base for long-lasting indirect restorations, with excellent mechanical properties, regardless of the curing mode.



## Cuts like dentine

GRADIA CORE cuts just like dentine, making it easier for you to shape it with a bur, and ensures smooth transitions and clean, precise margins.

GRADIA CORE is sufficiently radiopaque for easy clinical evaluation. The elastic modulus is close to dentine to avoid stress build-up.

271 Radiopacity (%Al)

Elastic modulus\* (GPa) 10.8

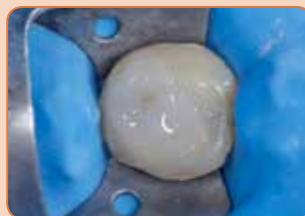
\*In dual cure mode. Source: GCC R&D - Data on file.



Initial situation



After endodontic treatment



Core build-up with GRADIA CORE



Core prepared as crown abutment

# GRADIA CORE from GC

## Rock solid at all depths



GRADIA CORE	
013046	GRADIA CORE Kit (1x GRADIA CORE Cartridge, 1x G-Premio BOND; 1x G-Premio BOND DCA)
900784	GRADIA CORE Intro Package (1x Starter Kit; 1x Cartridge Dispenser)
003652	GRADIA CORE 10mL Cartridge Refill
900511	GRADIA CORE Cartridge Dispenser
900495	Automix Tip for Endo (x10)
009036	G-Premio BOND 5mL Bottle Refill
009552	G-Premio BOND DCA 3mL Bottle Refill

### Also discover



**everStickPOST**  
Individually formable glass fibre post



**FIBER POST**  
Hard glass fibre post



**G-Multi PRIMER**  
Universal primer



**everX Flow**  
Short-fibre reinforced flowable composite for dentine replacement



**D-Light Pro**  
Dual wavelength LED curing light

D-Light Pro, everStickPOST, everX Flow, G-Multi PRIMER, G-Premio BOND, G-Premio BOND DCA, FIBER POST and GRADIA CORE are trademarks of GC.

**GC EUROPE N.V.**  
Head Office  
Researchpark  
Haasrode-Leuven 1240  
Interleuvenlaan 33  
B-3001 Leuven  
Tel. +32.16.74.10.00  
Fax. +32.16.40.48.32  
info.gce@gc.dental  
<http://www.gceurope.com>

**GC UNITED KINGDOM Ltd.**  
Coopers Court  
Newport Pagnell  
UK-Bucks. MK16 8JS  
Tel. +44.1908.218.999  
Fax. +44.1908.218.900  
info.uk@gc.dental  
<http://uk.gceurope.com>

