

everStick®C&B

Fibre reinforcement for composite bridges

951327-NU7708
30000523

DISTRIBUTED BY
GC CORPORATION
76-1 Hasunuma-cho, Itabashi-ku, Tokyo 174-8585, Japan

GC AMERICA INC.
3737 West 127th Street, Alsip, IL 60803 U.S.A.
TEL: +1-708-597-0900

GC ASIA DENTAL PTE. LTD.
5 Tampines Central 1, #06-01 Tampines Plaza, Singapore 529541
TEL: +65 6546 7588

MADE IN FINLAND



Fibre type: Silanated E-Glass fibre impregnated with Bis-GMA and PMMA

Form: Unidirectional fibre bundle
Diameter: ~ 1.5-1.7 mm



Keep away from sunlight



Temperature limit
2 °C / 35 °F
8 °C / 46 °F

Caution: US Federal law restricts this device to sale by or on the order of a dentist.

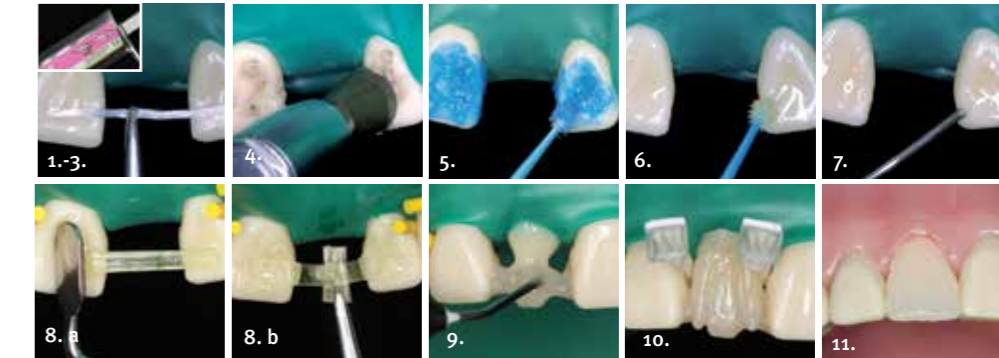
everStick®C&B



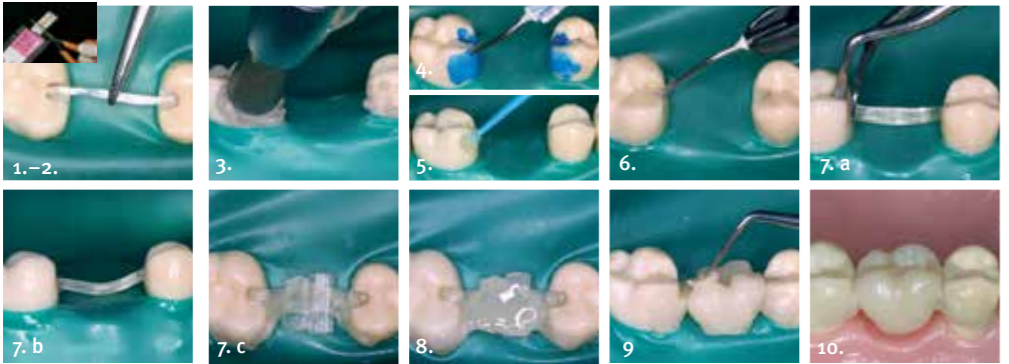
EN FIBRE REINFORCEMENT FOR COMPOSITE BRIDGES
BG ФИБРОВЛАКНА ЗА УКРЕПВАНЕ НА КОМПОЗИТНИ МОСТОВЕ
CS VLÁKNOVÉ VÝZTUŽE PRO KOMPOZITNÍ MŮSTKY
HR VLAKNA ZA POJAČANJE ZA KOMPOZITNE MOSTOVE
HU ŰVEGSZÁLAS MEGERŐSÍTÉS KOMPOZIT HIDAKHOZ
PL WZMOCNIENIE Z WŁÓKNA SZKLANEGO DO MOSTÓW KOMPOZYTOWYCH
RO FIBRE CONSOLIDANTE PENTRU PUNȚI DIN COMPOZIT
RU АРМИРУЮЩЕЕ СТЕКЛОВОЛОКНО ДЛЯ МОСТОВИДНЫХ КОНСТРУКЦИЙ ИЗ КОМПОЗИТОВ
SK VÝSTUŽ ZO SKLENÝCH VLÁKIEN PRE VLÁKNAMI VYSTUŽENÉ KOMPOZITNÉ MOSTÍKY
SL VLAKNATE OJAČITVE ZA KOMPOZITNE MOSTIČKE
SR FIBER OJAČANJE ZA KOMPOZITNE MOSTOVE
UK ПІДСИЛЕНИЙ СКЛОВОЛОКНОМ МАТЕРІАЛ ДЛЯ КОМПОЗИТНИХ МОСТІВ
TR KOMPOZIT KÖPRÜLER İÇİN FİBER GÜÇLENDİRME
LV ŠKIEDRU STIPRINĀJUMS KOMPOZĪTA TILTIEM
LT KOMPOZITINIUS TILTUS SUTVIRTINANČIOS SKAIDULOS
ET FIBERTUGEVDUS KOMPOSIITSILDADELE

GC

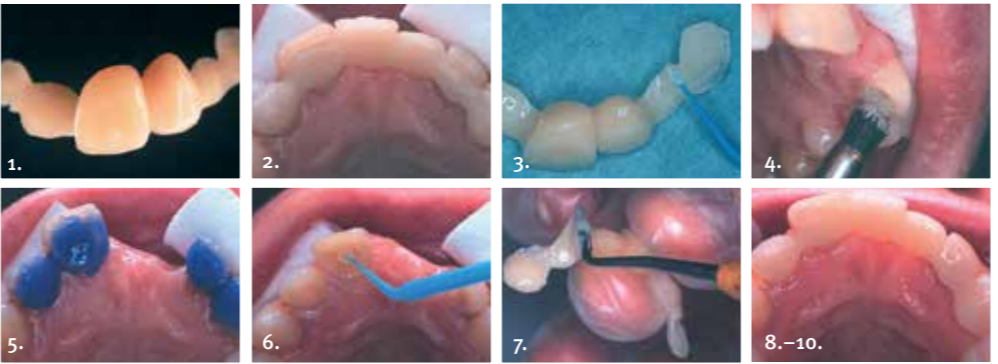
everStick®
C&B 1. A surface retained bridge in the anterior region



everStick®
C&B 2. A surface retained bridge in the posterior region



everStick®
C&B 3. Cementation instructions



Handwritten notes area with horizontal dashed lines for writing.